



PRECISE3DM
A DIGITAL MANUFACTURING SOLUTION

**A DIGITAL MANUFACTURING
SOLUTION FOR ENGINEERING
AND TECHNICAL EDUCATIONS**

**WE HELP YOU UPGRADE WITH
THE GAME OF TECHNOLOGY**

www.precise3dm.com



PRECISE3DM

DIGITAL MANUFACTURING LAB SET UP

We are reinventing the educational lab into a Digital manufacturing lab by merging professional 3D Scanner, digital reverse engineering software, low volume production 3D printer, and digital inspection software in one seamless ecosystem.



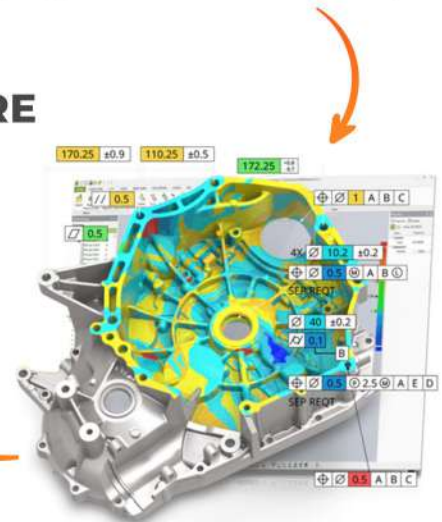
3D SCANNER
(EINSCAN PRO 2X)



3D REVERSE
ENGINEERING SOFTWARE
(GEOMAGIC DESIGN X)



LOW VOLUME
PRODUCTION
3D PRINTER
(Figure -4 Standalone)



3D DIGITAL LAB FROM PRECISE3DM

3D METROLOGY SOFTWARE
(Geomagic Control X)



PRECISE3DM

EinScan PRO 2X

3D SCANNER

3D scanning technology has become a vital asset within the industry. It has replaced outdated traditional practice by altering the engineering process onto a digital platform.

Our 3d multifunctional 3d scanner will help you learn how multiple ways of 3D scanning technic works and how it has impacted the industry, where CMMs have been substituted.

EINSCAN PRO 2X

It is a user-friendly handheld scanner where you can quickly scan complex shapes and objects. The truly portable and versatile handheld 3D scanner for high-precision results is an excellent option for 3D scanning small to medium-sized objects. Scan faster and more accurately, Ideal for high-quality 3D modeling.

MULTIPURPOSE SCANNER

- ▶ You can use this 3d scanner as a portable handheld scanner that you can hold in your hand and 3d scan large objects and sculptures, etc.
- ▶ It allows 3D scanning on a tripod with HD scanning to scan medium-size engineering parts.
- ▶ The colour (texture) scanning has a separate colour camera pack to 3d scan objects with colour



(Handheld)



(Turntable)



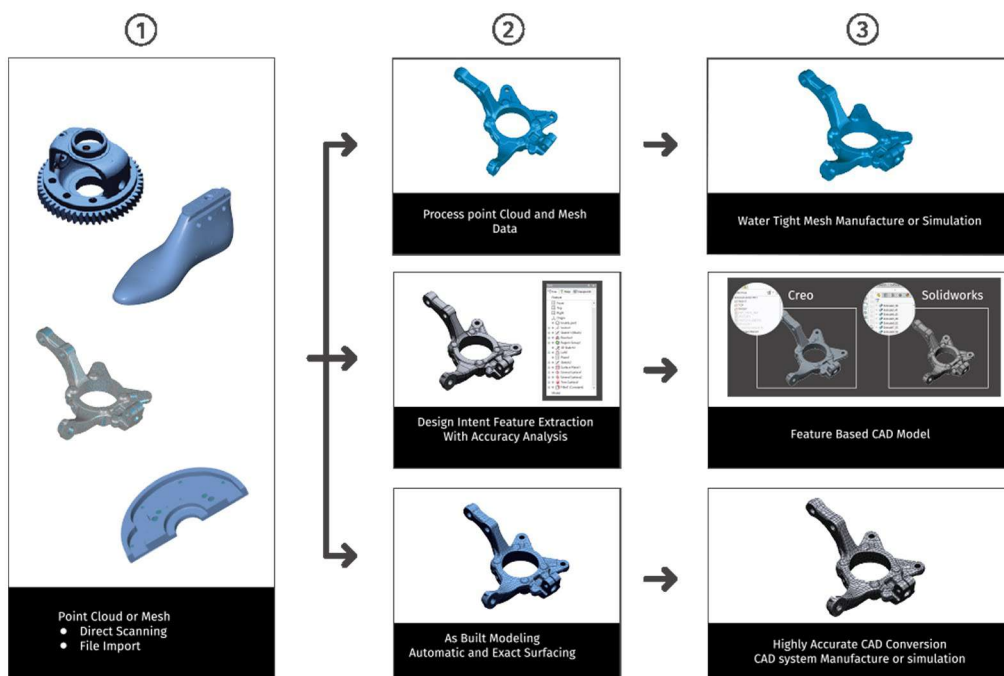
(Fixed with tripod)

Geomagic Design X, the industry's most comprehensive reverse engineering software, combines history-based CAD with 3D scan data processing so you can create feature-based, editable solid models compatible with your existing CAD software. It is purpose-built for converting 3D scan data into high-quality feature-based CAD models. It does what no other software can, with its combination of automatic and guided solid model extraction, incredibly accurate exact surface fitting to organic 3D scans, mesh editing, and point cloud processing. Now, you can scan virtually anything and create manufacturing-ready designs.

FEATURES

- Supports import of over 60 file formats, including polygons, point clouds, and CAD
- Expertly handles massive mesh and point cloud data alignment, processing, and refining, mesh construction
- Automatic, feature-based solid and surface extraction direct from 3D scans
- Automated Accuracy Analyzer™ tools compare and validate surfaces, solids, and sketches against original scan data
- Live Transfer™ supports the output of data to the industry's leading CAD systems Industry-leading Exact surface creation converts organic shapes to precise CAD models.

WORKFLOW



ULTRA-FAST AND AFFORDABLE FOR SAME-DAY PROTOTYPING AND LOW-VOLUME PRODUCTION

Once cad design is ready and fed into the 3D printer, "Figure- 4 - The First-ever same day prototyping and low volume production 3d printer", produces the direct end-use parts. The broad and many ranges of figure 4 materials address the wide variety of application needs such as functional prototyping, direct production of end-use parts, molding and casting, rigid and durable thermoplastic-like behaviors, rubber-like, castable, heat resistant, and biocompatible capable materials.

KEY FEATURES

- ▶ Affordable initial investment
- ▶ High throughput vs. competitive 3D printing technologies
- ▶ Industrial-grade durability
- ▶ Print and use same day
- ▶ The low total cost of operations
- ▶ Application flexibility
- ▶ Efficient design iteration
- ▶ Six Sigma quality and repeatability



SPECIFICATIONS

- ▶ Non-contact membrane Figure 4 technology
- ▶ Printable Build Volume (W x D x H)
124.8 x 70.2 x 196 mm (4.9 x 2.8 x 7.7 in)
- ▶ Industry-leading 3D Sprint software for file preparation and production
- ▶ Cloud connectivity for predictive and prompt service with 3D connect capability.
- ▶ Production-grade materials
- ▶ Compact printer footprint
- ▶ Manual material feed

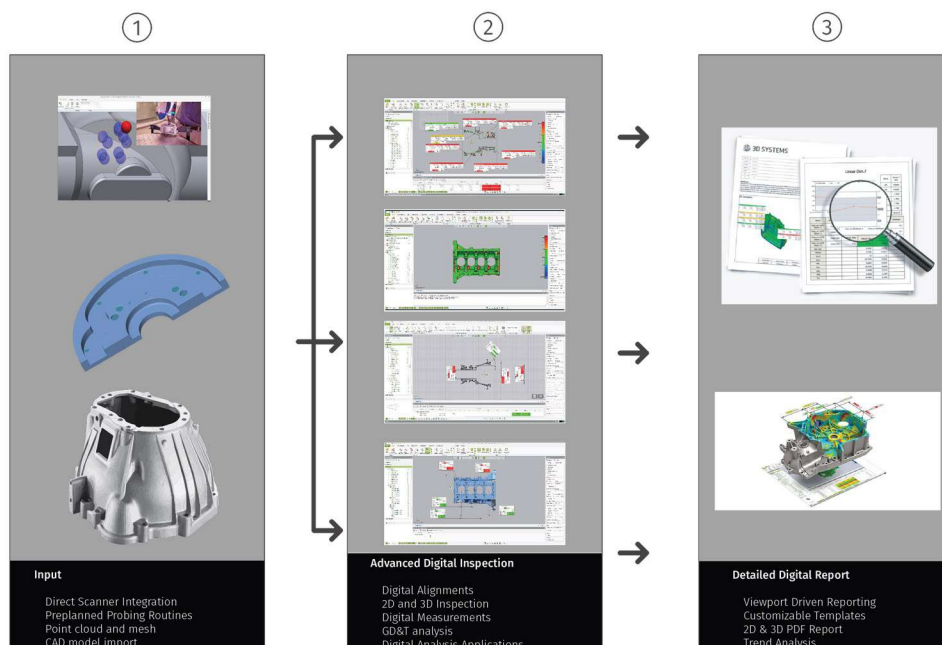
DIGITAL INSPECTION

Geomagic Control X is Powerful, fully- featured software inspection solution that allows users to work with 3D Measured Data. Geomagic Control X Provides Unrivalled Data Handling, accuracy, and speed via a cutting-edge interface. Geomagic Control X focuses on massive Measured Data handling, performance, ease of use, and calculation accuracy.

FEATURES

- ▶ The improved user interface which provides us with guidance on the inspection workflow.
- ▶ Customizable user interface which enables us to combine the frequently used tools.
- ▶ Addition of improved 2D and 3D GD & T for improved inspection process.
- ▶ Intuitive dimensioning based on cad features delivers increased efficiency.
- ▶ Simultaneously create both ordered and unordered inspection model. Geomagic Control X combines the freedom of fast, accurate unordered inspection with ordered history-based inspection process for repeatable inspection, everytime, no matter how you make it
- ▶ Report definition in Geomagic Control X is highly flexible, making customized Communication, fast and simple for each stakeholder.

WORKFLOW



**Contact us today and get a FREE quote
& Demo on site or online !**



PRECISE3DM
A DIGITAL MANUFACTURING SOLUTION

www.precise3dm.com

Chennai

11/545, 2nd Floor, Rajas Tower,
Medavakkam Main Rd,
Kovilambakkam, Chennai,
Tamil Nadu 600129
Email: sales@precise3dm.com

Mumbai

No:403, 4th floor, Techno Park,
New Link Rd, opposite Metro Station
Ic Colony, Eksar, Borivali West,
Mumbai, Maharashtra 400066
Contact No : 9840478347